

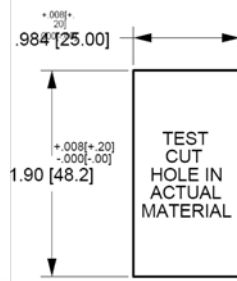
Contura Mounting Panels

MOUNTING PANEL

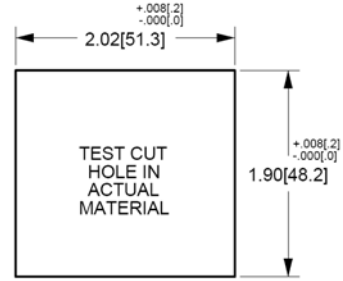
For additional units, add 1.03[26.2] per unit.
For more than 2 V-Series Switches, add middle section. Available in Panel Thicknesses listed below. Consult factory.

MOUNTING PANEL THICKNESS

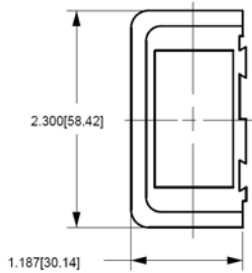
.062[1.57]	.187[4.75]
.093[2.36]	.250[6.35]
.125[3.17]	.375[9.52]



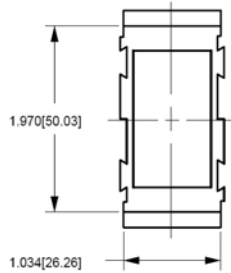
VMS
MOUNTING PANEL
HOLE



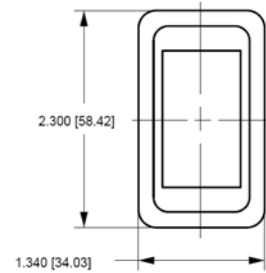
MOUNTING PANEL
OPENING
(2) UNITS



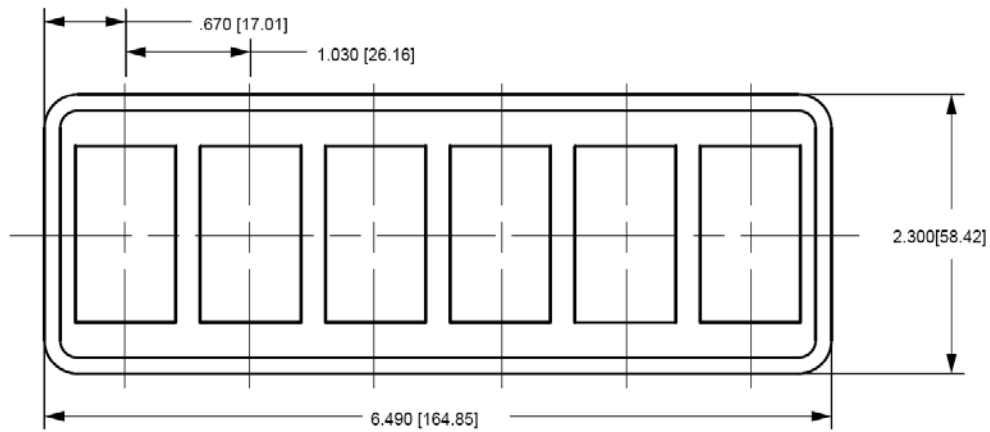
VME
MOUNTING
PANEL
END



VMM
MOUNTING PANEL
MIDDLE



VMS
MOUNTING
PANEL



VM6
MOUNTING PANEL

Hole Opening Size For VM6 Switch Mount 6 3/16 X 1 7/8 (157mmX47mm)