

FAQ's about Application and Fitting .

Question :

Will the door panels fit my particular Land Rover doors ?

Answer :

If your Land Rover Series III , 90/110 has the Anti Burst style door lock and the sliding non roll up type windows (pictured bellow) , Yes it will fit . (II and II a's need a slight modification .)

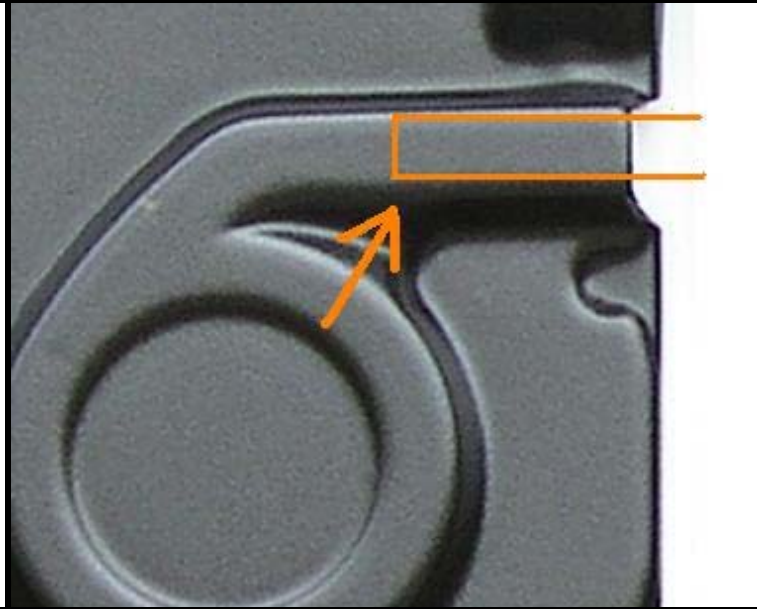


Easy 1-2-3 Fitting .

1. Place Door Panel in position paying special attention to location .
2. Drill holes for screws along top edge and fix panel with screws and snap caps provided . Now do the same for the bottom and then the sides .
3. Fill your pockets .



**FAQ's about Application and Fitting .
Page 2 , Series II and IIa**



II and IIa owners are going to have to trim a little out of this area for the Check Rod Strap clearance . You will also have to relocate the Check Rod Strap Bracket approximately 3/8 “ (9mm) lower on the door frame for a perfect fit .



Anti Burst door locks as before are a must have .